



TRACKING  
FINANCIAL  
FLOWS TO  
FOOD  
SYSTEMS



# UN SUMMIT FOOD SYSTEMS TRANSFORMATION

**Global Price  
\$350-400 Billion/Year**

**LDCs  
20% GDP**



# CO-LEADS FINANCING AGENDA

IFAD & World Bank





# | EVIDENCE ON FINANCIAL FLOWS TO FOOD SYSTEMS

**IMPACTFUL  
INVESTMENTS  
DEPEND ON  
TIMELY &  
HIGH-QUALITY  
FINANCIAL  
DATA**



# TRACKING FINANCIAL FLOWS TO FOOD SYSTEMS

## 3 SOURCES OF FINANCING



# TRACKING FINANCIAL FLOWS TO FOOD SYSTEMS

## 5 FOOD SYSTEMS COMPONENTS





# FINANCING WINDOWS LONG-TERM AFFORDABLE FINANCING TO FOOD SYSTEMS





**GLOBAL**

# INTERNATIONAL DEVELOPMENT FINANCING TO FOOD SYSTEMS

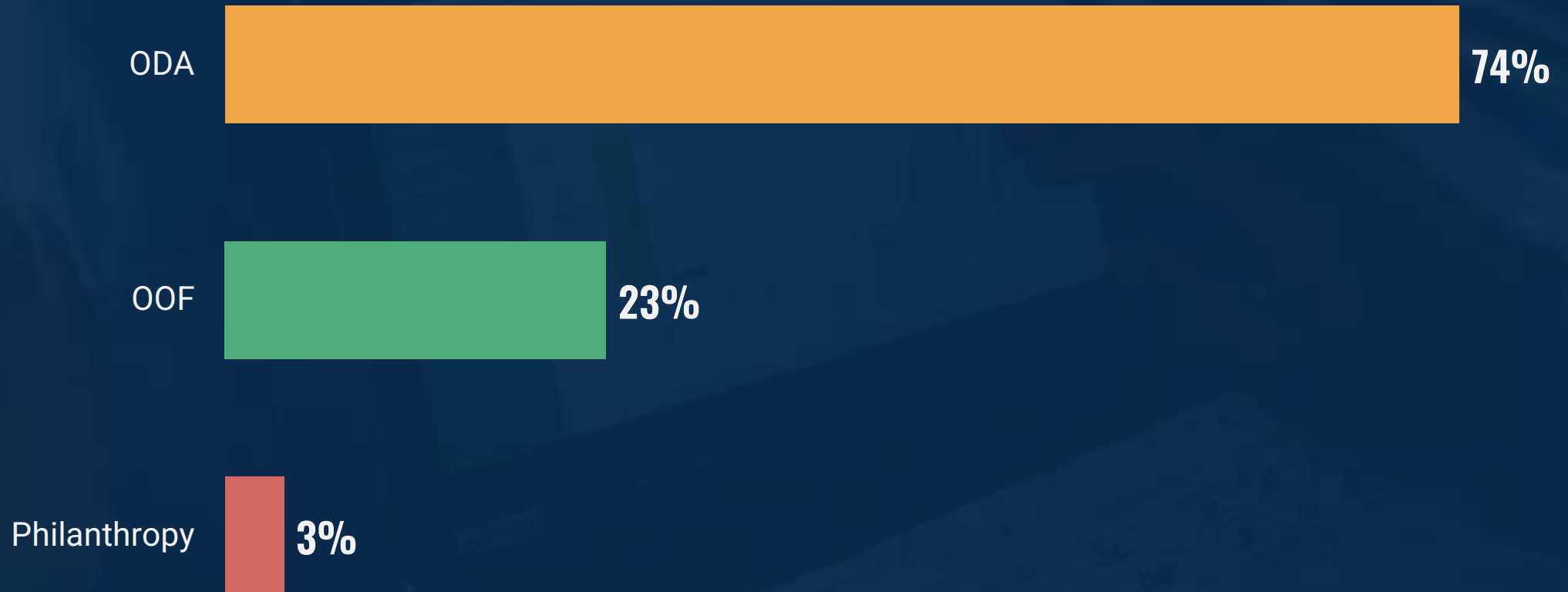
2018-21 (in constant US\$ Billions, base year 2020), based on disbursements



## GLOBAL

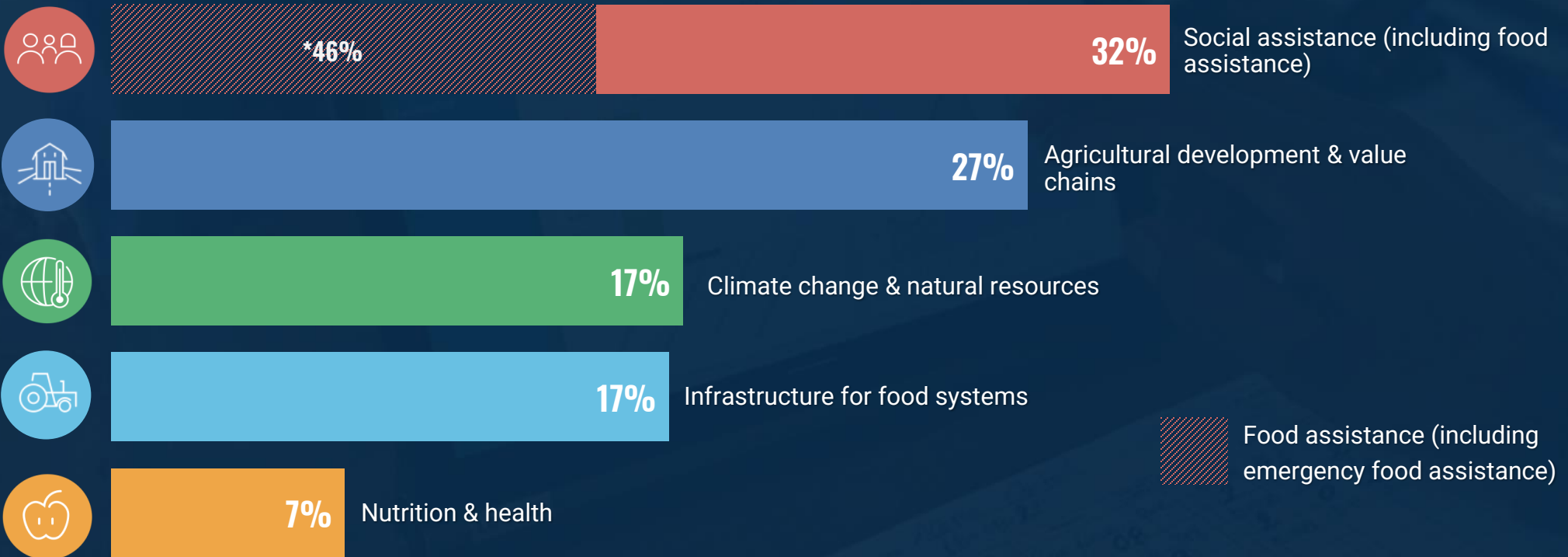
# DISTRIBUTION OF INTERNATIONAL DEVELOPMENT FINANCIAL FLOWS

2018-21 (in constant US\$ Billions, base year 2020), based on disbursements



# GLOBAL INTERNATIONAL DEVELOPMENT FINANCING TO FOOD SYSTEMS - ON WHAT?

2018-21, average in % based on disbursements



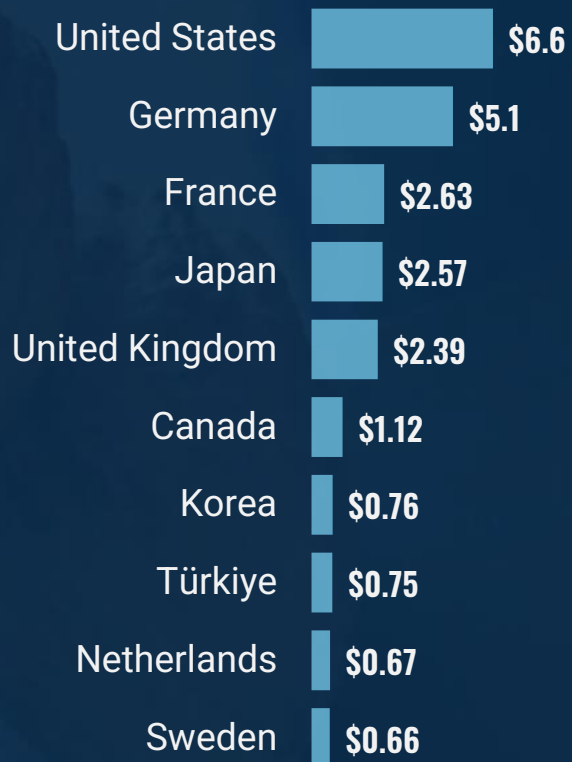
\* Share food assistance in social assistance

Data accredited to OECD

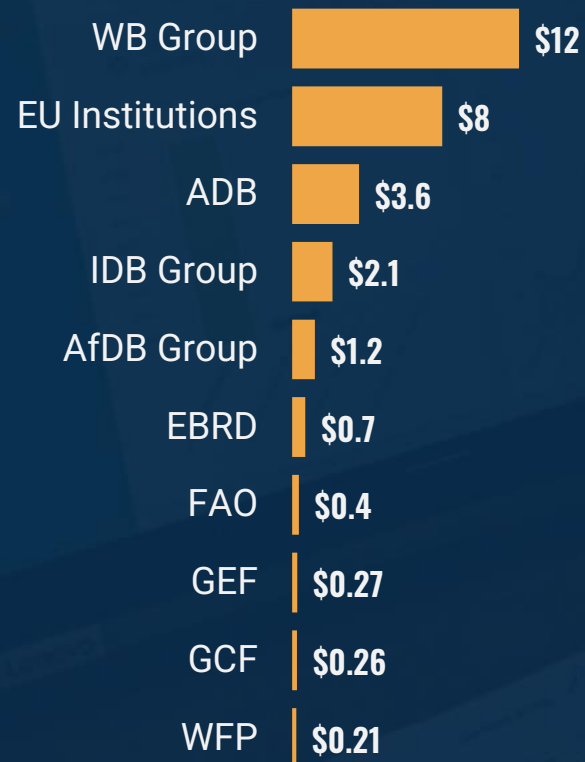
# GLOBAL INTERNATIONAL DEVELOPMENT FINANCING – TOP 10 DONORS TO FOOD SYSTEMS

2018-21 (in constant US\$ Billions, base year 2020), based on disbursements

## Bilaterals



## Multilaterals



## Philanthropic donors



# AFRICA

## INTERNATIONAL DEVELOPMENT FINANCIAL FLOWS TO FOOD SYSTEMS - MULTILATERAL

2018-21, average in % based on disbursements



36.9%

Agricultural development & value chains



\*32%

29.7%

Social assistance (including emergency food assistance)



19.5%

Infrastructure for food systems



9.2%

Climate change & natural resources



4.7%

Nutrition & health



Food assistance (including emergency food assistance)

\* Share food assistance in social assistance

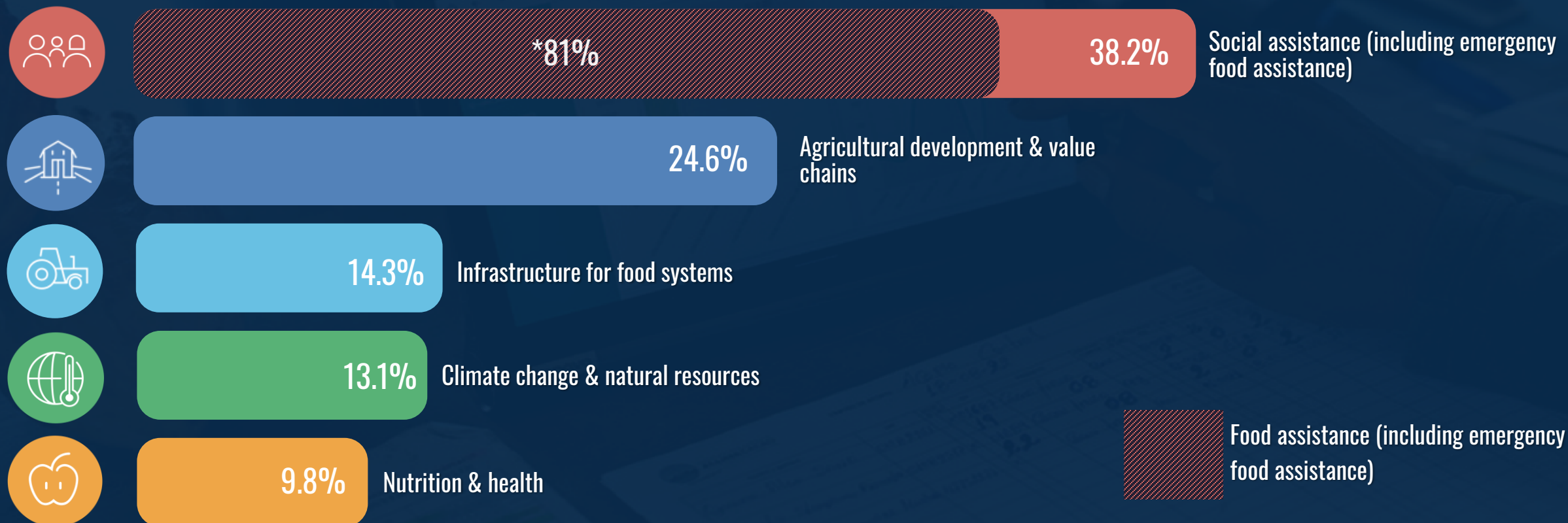
Data accredited to OECD

# AFRICA

## INTERNATIONAL DEVELOPMENT FINANCIAL FLOWS TO FOOD SYSTEMS

### BILATERAL

2018-21, average in % based on disbursements




\* Share food assistance in social assistance

Data accredited to OECD

# AFRICA

## INTERNATIONAL DEVELOPMENT FINANCIAL FLOWS TO FOOD SYSTEMS – TOP RECIPIENTS

2018-21, total disbursements

 Lower-Middle  
Income Countries



- Most populous
- Fragility & Conflicts
- High acute food insecurity
- Highly vulnerable climate change

Population  
Fragility & conflicts Food  
11 countries received 55%  
assistance disbursements for food systems  
Sahel, Horn Africa, DRC

## 2. FINANCING WINDOWS

2024-26

CO-LEADS  
US TREASURY  
ADB

## IFIs FORUM FOOD SYSTEMS

- > AsDB
- > AfDB
- > IDB
- > EBRD
- > WB
- > IFAD

LEAD IFI COLLABORATIVE ON FINANCING





# FOOD SYSTEMS TRANSFORMATION FINANCING AGENDA

**IFAD & WB  
CO-LEADS  
IN SUPPORT  
OF HUB**



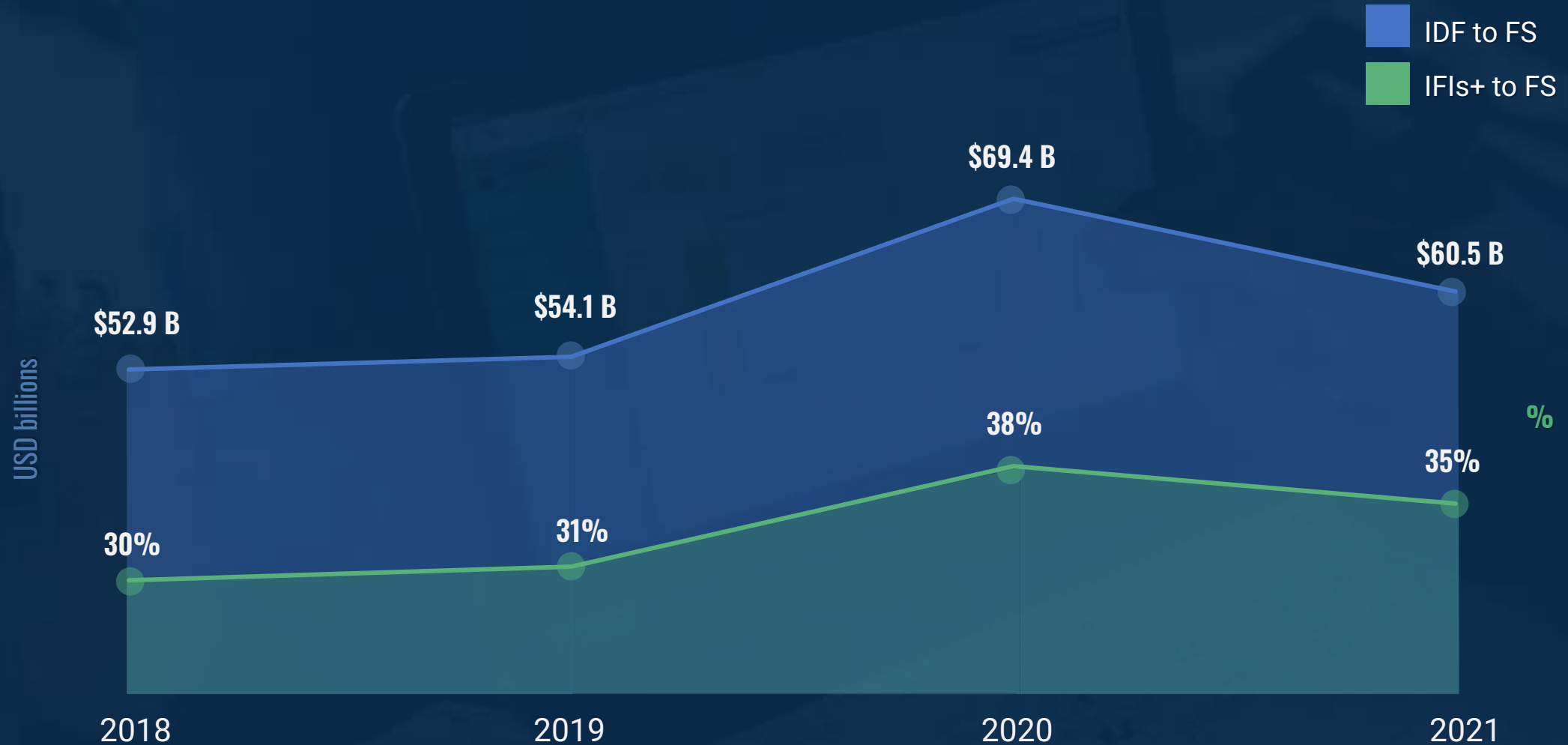
.....

- Scale-up long-term development financing
  - Step up concessional funding & operational support
  - More flexible lending rates & borrowing limits
  - Accelerate disbursements
- 

IFIs+

# SHARE OF INTERNATIONAL DEVELOPMENT FINANCING TO FOOD SYSTEMS

2018-21 (in constant US\$ Billions, base year 2020), based on disbursements

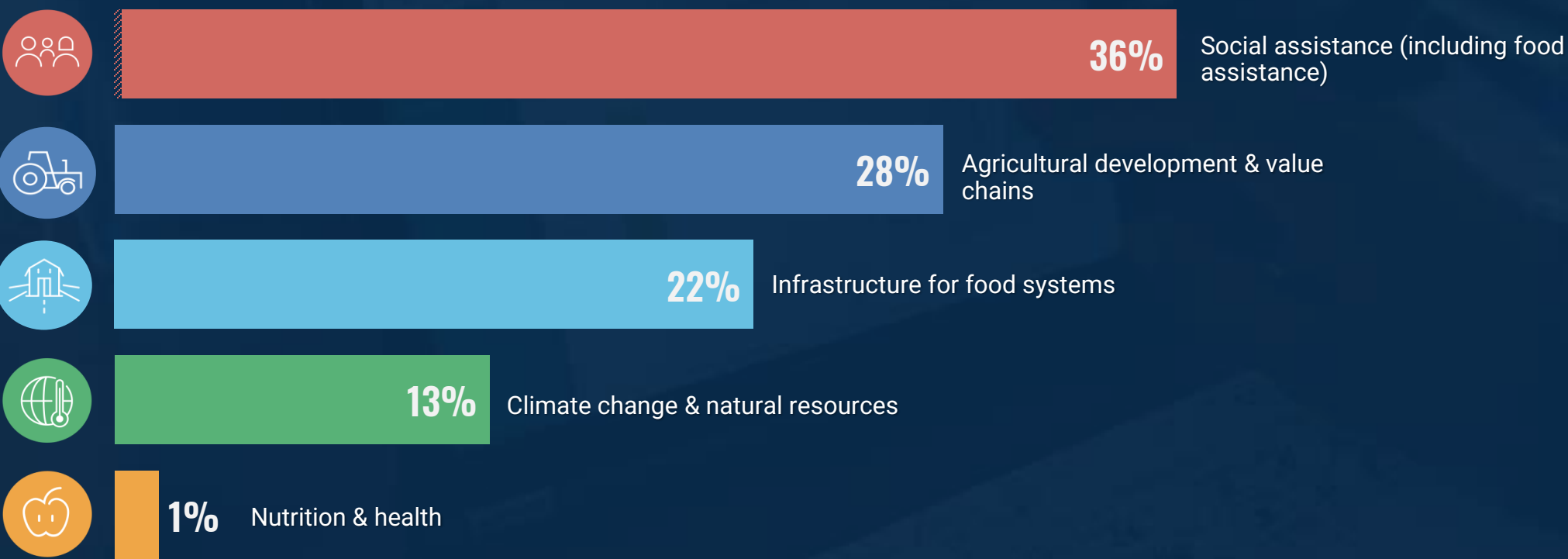


IFIs+

# INTERNATIONAL DEVELOPMENT FINANCING TO FOOD SYSTEMS

## - ON WHAT?

2018-21, average in % based on disbursements



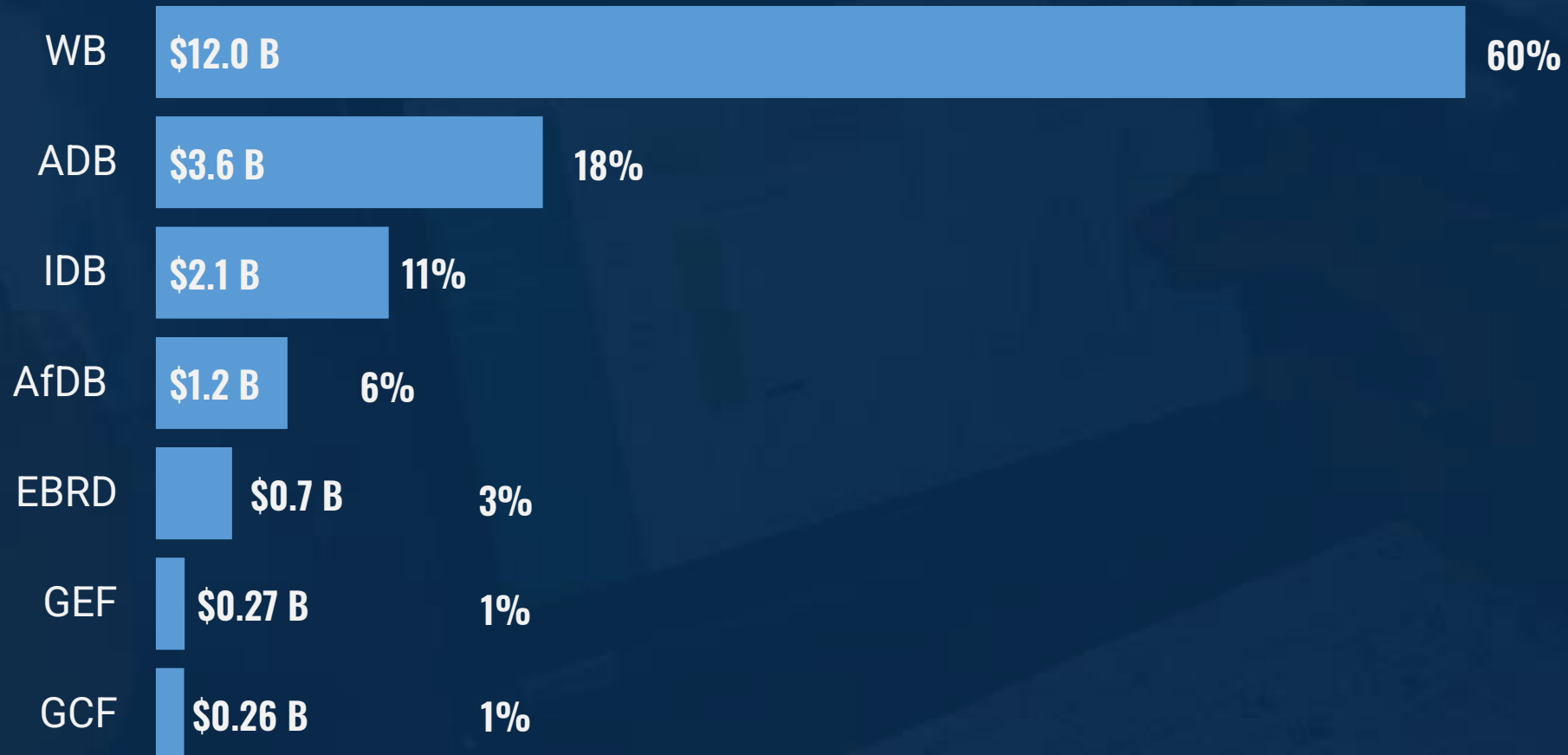
\* Share food assistance in social assistance

Data accredited to OECD

## IFIs+ RANKING

# INTERNATIONAL DEVELOPMENT FINANCING TO FOOD SYSTEMS

2018-21 (in constant US\$ Billions, base year 2020), average based on [disbursements](#)



**IFAD**

# INTERNATIONAL DEVELOPMENT FINANCING TO FOOD SYSTEMS

## - ON WHAT?

2018-21, average in % based on commitments



**98.7%**

Agricultural development & value chains



**1.1%**

Climate change & natural resources



**0.3%**

Infrastructure for food systems



# 3. GAME-CHANGING COUNTRY FINANCING PLAN OF ACTION 2024-25

- > 2-3 countries
- > Region

- > Domestic IFIs+
- > Private Sector

- > Demonstration
- > Exchanges
- > Learning

# FINANCING AGENDA OUTLOOK FSS+4

1.

**EVIDENCE**

2.

**FINANCING  
WINDOWS**

3.

**GAME-CHANGING  
COUNTRY FINANCING**

---

**Policy Engagement**



TRACKING  
FINANCIAL  
FLOWS TO  
FOOD  
SYSTEMS